

2018 DORP Report for Focus Learning Academy of Southwest Columbus

IRN: 142927
School Type: High School

Address: 190 Southwood Ave
Columbus, OH 43207-1133

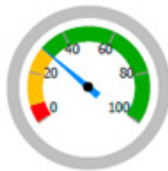
County: Franklin
ITC: MEC
Sponsor: Focus Learning Academy of Southwest Columbus

Graduation Rates

4-Year Graduation Rate

Applies to the Class of 2017, i.e. students who entered 9th grade in 2014 and graduated by 2017.

Class of 2017 Graduates:	Students Countable:	Graduation Rate:
39	129	30.2%



RATING

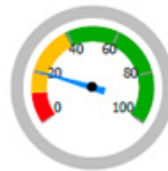
Meets Standards

Exceeds	36.0-100.0%
Meets	8.0-35.9%
Does Not Meet	0.0-7.9%

5-Year Graduation Rate

Applies to the Class of 2016, i.e. students who entered 9th grade in 2013 and graduated by 2017.

Class of 2016 Graduates:	Students Countable:	Graduation Rate:
26	126	20.6%



RATING

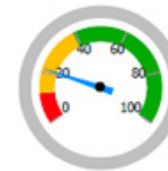
Meets Standards

Exceeds	40.0-100.0%
Meets	12.0-39.9%
Does Not Meet	0.0-11.9%

6-Year Graduation Rate

Applies to the Class of 2015, i.e. students who entered 9th grade in 2012 and graduated by 2017.

Class of 2015 Graduates:	Students Countable:	Graduation Rate:
29	136	21.3%



RATING

Meets Standards

Exceeds	40.0-100.0%
Meets	12.0-39.9%
Does Not Meet	0.0-11.9%

7-Year Graduation Rate

Applies to the Class of 2014, i.e. students who entered the 9th grade in 2011 and graduated by 2017.

Class of 2014 Graduates:	Students Countable:	Graduation Rate:
29	131	22.1%



RATING

Meets Standards

Exceeds	40.0-100.0%
Meets	12.0-39.9%
Does Not Meet	0.0-11.9%

8-Year Graduation Rate

Applies to the Class of 2013, i.e. students who entered the 9th grade in 2010 and graduated by 2017.

Class of 2013 Graduates:	Students Countable:	Graduation Rate:
42	176	23.9%



RATING

Meets Standards

Exceeds	40.0-100.0%
Meets	12.0-39.9%
Does Not Meet	0.0-11.9%

Combined Graduation Rate

The weighted average of the five individual graduation rates.

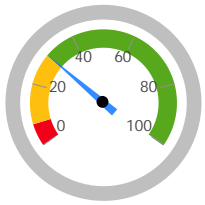
Combined Graduates:	Combined Students:	Graduation Rate:
165	698	23.6%



RATING

Meets Standards

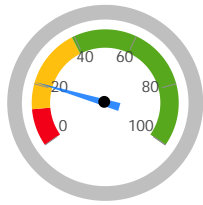
Exceeds	40.0-100.0%
Meets	12.0-39.9%
Does Not Meet	0.0-11.9%



RATING

Meets Standards

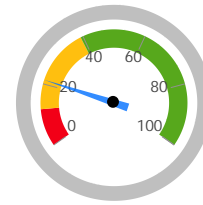
Exceeds 36.0-100.0%
Meets 8.0-35.9%
Does Not Meet 0.0-7.9%



RATING

Meets Standards

Exceeds 40.0-100.0%
Meets 12.0-39.9%
Does Not Meet 0.0-11.9%



RATING

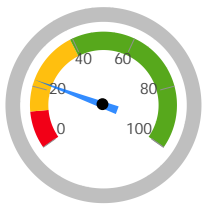
Meets Standards

Exceeds 40.0-100.0%
Meets 12.0-39.9%
Does Not Meet 0.0-11.9%

7-Year Graduation Rate

Applies to the Class of 2014, i.e. students who entered the 9th grade in 2011 and graduated by 2017.

Class of 2014 Graduates:	Students Countable:	Graduation Rate:
29	131	22.1%



RATING

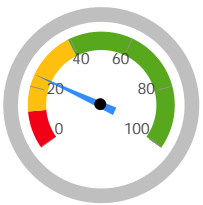
Meets Standards

Exceeds 40.0-100.0%
Meets 12.0-39.9%
Does Not Meet 0.0-11.9%

8-Year Graduation Rate

Applies to the Class of 2013, i.e. students who entered the 9th grade in 2010 and graduated by 2017.

Class of 2013 Graduates:	Students Countable:	Graduation Rate:
42	176	23.9%



RATING

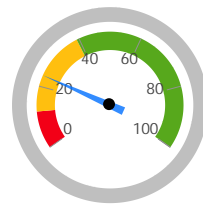
Meets Standards

Exceeds 40.0-100.0%
Meets 12.0-39.9%
Does Not Meet 0.0-11.9%

Combined Graduation Rate

The weighted average of the five individual graduation rates.

Combined Graduates:	Combined Students:	Graduation Rate:
165	698	23.6%



RATING

Meets Standards

Exceeds 40.0-100.0%
Meets 12.0-39.9%
Does Not Meet 0.0-11.9%

High School Assessment Test Passage Rate

The test passage rate is the percent of students in 12th grade or nearing 22 years old who have passed all required high school assessments.

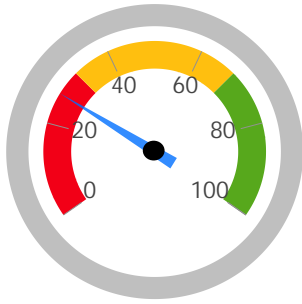
Progress

This measures the progress for all students in math and reading.

Students in the School for a Full Academic Year: 45

Students Who Passed All Required Tests: 12

Students who Passed All Required Tests: 26.7%



Exceeds	68.0-100.0%
Meets	32.0-67.9%
Does Not Meet	0.0-31.9%

RATING

Does Not Meet Standards

Progress Score		
Reading	Mathematics	Overall
Meets Standards	Meets Standards	Meets Standards
	Exceeds 2.00 and up	
	Meets -2.00 to 1.99	
	Does Not Meet below -2.00	

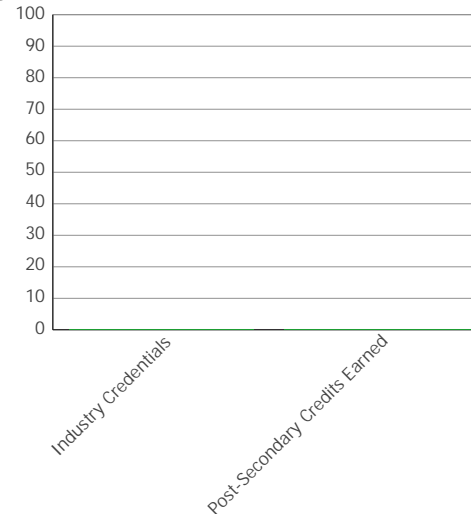
RATING

Meets Standards

Other Student Outcome Data

Denominator (Graduation Cohort for 2013 - 2017): 255

	Student #	Pct
Industry Credentials	0	0.0
Post-Secondary Credits Earned	0	0.0



Annual Measurable Objectives

The Annual Measurable Objectives score is determined using multiple data points. For each student subgroup, the school's results are compared to the statewide Annual Measurable Objectives (AMOs). "Points" are earned based on how the school compared to the AMO, to their results last year (improvement), and to how far they were from meeting the AMO (the "gap"). These points are averaged to determine a preliminary score and rating, which may be demoted if certain minimum performance requirements are not met.

AMO - English Language Arts Proficiency

Subgroup	Metrics	Took Test #	Perf Index	Goal	LT Goal	LT Gap	Took Test LY #	Perf Index LY	Improve	LT Gap Close %	VA Gain Index	Points
All Students		25	41.034	83.8	100.0	59.0	36	50.238	(9.2)	-15.6%	0	0.0
Am. Indian or Alaskan Native		0	NC	78.6	88.1	NC	0	NC	NC	NC	NC	NR
Asian or Pacific Islander		0	NC	92.4	95.8	NC	0	NC	NC	NC	NC	NR
Black, Non-Hispanic		4	NC	63.4	79.7	NC	9	NC	NC	NC	NC	NR
Hispanic		0	NC	71.8	84.4	NC	0	NC	NC	NC	NC	NR
Multiracial		3	NC	78.3	88.0	NC	2	NC	NC	NC	NC	NR
White, Non-Hispanic		18	NC	86.3	92.4	NC	25	54.000	NC	NC	NC	NR
Economic Disadvantage		25	41.034	70.8	83.8	42.8	35	50.732	(9.7)	-22.7%	0	0.0
English Learner		0	NC	65.6	80.9	NC	0	NC	NC	NC	NC	NR
Students with Disabilities		11	NC	57.3	76.3	NC	9	NC	NC	NC	NC	NR

Total of Subgroup Points: 0.0

Possible Subgroup Points: 200.0

English Language Arts Points Earned (Total / Possible): 0.0

1. If Perf Index is greater than the (Short Term) Goal, then 100.0 points are earned and the Long Term Gap is N/A. If not, the LT Gap is the difference between Perf Index and the Long Term Goal. Subgroups of less than 25 students are Not Rated (NR).
2. A full 100.0 points are also awarded if the single year Value Added Gain Index for the subgroup is at least 1.0.
3. Otherwise, $LT\ Gap\ Close\ \% = (Improv / LT\ Gap) * 100.$, and the points awarded are $LT\ Gap\ Close\ \% * 10.$ It is impossible to earn more than 100 or less than zero points.
4. After all subgroup points have been calculated, they are added together. The total is divided by the maximum points possible (100 x number of subgroups that were not NR) to determine the final points for Reading.

AMO - Math Proficiency

Subgroup	Metrics	Took Test #	Perf Index	Goal	LT Goal	LT Gap	Took Test LY #	Perf Index LY	Improve	LT Gap Close %	VA Gain Index	Points
All Students		21	NC	84.2	100.0	NC	21	NC	NC	NC	NC	NR
Am. Indian or Alaskan Native		0	NC	76.8	87.1	NC	1	NC	NC	NC	NC	NR
Asian or Pacific Islander		0	NC	97.8	98.8	NC	0	NC	NC	NC	NC	NR
Black, Non-Hispanic		4	NC	61.3	78.5	NC	3	NC	NC	NC	NC	NR

Subgroup	Metrics	Took Test #	Perf Index	Goal	LT Goal	LT Gap	Took Test LY #	Perf Index LY	Improve	LT Gap Close %	VA Gain Index	Points
Hispanic		0	NC	72.3	84.6	NC	0	NC	NC	NC	NC	NR
Multiracial		2	NC	77.7	87.6	NC	3	NC	NC	NC	NC	NR
White, Non-Hispanic		15	NC	87.6	93.1	NC	14	NC	NC	NC	NC	NR
Economic Disadvantage		21	NC	71.1	84.0	NC	21	NC	NC	NC	NC	NR
English Learner		0	NC	70.1	83.4	NC	0	NC	NC	NC	NC	NR
Students with Disabilities		10	NC	58.2	76.8	NC	6	NC	NC	NC	NC	NR

Total of Subgroup Points: 0.0
 Possible Subgroup Points: 0.0
 Math Points Earned (Total / Possible): 0.0

1. If Perf Index is greater than the (Short Term) Goal, then 100.0 points are earned and the Long Term Gap is N/A. If not, the LT Gap is the difference between Perf Index and the Long Term Goal. Subgroups of less than 25 students are Not Rated (NR).
2. A full 100.0 points are also awarded if the single year Value Added Gain Index for the subgroup is at least 1.0.
3. Otherwise, $LT\ Gap\ Close\ \% = (Improv / LT\ Gap) * 100.$, and the points awarded are $LT\ Gap\ Close\ \% * 10$. It is impossible to earn more than 100 or less than zero points.
4. After all subgroup points have been calculated, they are added together. The total is divided by the maximum points possible (100 x number of subgroups that were not NR) to determine the final points for Math.

AMO - Graduation Rate

Subgroup	Metrics	Grads #	Non-Grads #	Cohort Students #	Grad Rate %	Goal	Gap	Grads LY #	Non-Grads LY #	Cohort Students # LY	Grad Rate LY %	Improve	Points
All Students		39	90	129	30.2	85.0	62.8	16	89	105	15.2	15.0	100.0
Am. Indian or Alaskan Native		1	2	3	NC	78.8	NC	0	3	3	NC	NC	NR
Asian or Pacific Islander		0	1	1	NC	88.8	NC	0	0	0	NC	NC	NR
Black, Non-Hispanic		11	28	39	28.2	68.5	54.3	5	25	30	16.7	11.5	100.0
Hispanic		0	3	3	NC	74.8	NC	0	1	1	NC	NC	NR
Multiracial		3	12	15	NC	79.9	NC	1	3	4	NC	NC	NR
White, Non-Hispanic		24	44	68	35.3	88.5	57.7	10	57	67	14.9	20.4	100.0
Economic Disadvantage		37	76	113	32.7	74.3	53.0	16	86	102	15.7	17.0	100.0
English Learner		0	0	0	NC	59.0	NC	0	0	0	NC	NC	NR
Students with Disabilities		7	20	27	25.9	72.3	58.7	3	18	21	14.3	0.0	0.0

Total of Subgroup Points: 400.0
 Possible Subgroup Points: 500.0
 Graduation Rate Points Earned (Total / Possible): 80.0

1. If [Grad Rate %] is greater than the Goal, then 100.0 points are earned and the Gap is not applicable (N/A). If not, the Gap is the difference between [Grad Rate %] and the Goal. Subgroups of less than 30 students are Not Rated (NR).
2. Improvement from last year's result is [Grad Rate %] minus [Grad Rate LY %]. If Improvement is greater than the Gap, then 100.0 points are earned.
3. Otherwise, partial points are awarded using the formula (Improvement / Gap) * 100. It is impossible to earn more than 100 or less than zero points.
4. After all subgroup points have been calculated, they are added together. The total is divided by the maximum points possible (100 x number of subgroups that were not NR) to determine the final points for Graduation Rate.

AMO - English Learners

	This Year	Last Year	Change
EL Students #	0	0	
Proficient #	0	0	
Not Proficient, Met Growth Target #	0	0	
Met %	0.000	0.000	0.000
Interim Goal %	51.0		
Interim Goal Met?	*		
Long Term Goal %	75.0	75.0	
Long Term Goal Gap	0.000	75.000	-75.000

$$\begin{array}{r}
 \text{Met \%} \\
 \text{Improvement}
 \end{array}
 \quad / \quad
 \begin{array}{r}
 \text{Current} \\
 \text{Year Gap}
 \end{array}
 \quad = \quad
 0.000\%
 \quad = \quad
 0.000 \text{ Points}$$

- 1) Please note that intermediate calculations are not rounded. Although three decimal places are displayed in this table, *all* decimal places are used internally until the final calculation, where the final points earned are rounded to one decimal place.
- 2) If the gap improvement is more than 10%, so the maximum 100 points have been earned.

AMO - Preliminary Score

The preliminary score is the average of the English Language Arts, Math, and Graduation Rate from the preceding pages. The result is applied to the rating scale to determine a preliminary rating.

English Language Arts Points:	0.0	Rating Scale:	Preliminary Rating:
Math Points:	0.0	Exceeds Standards 36.0 - 100.0%	Exceeds Standards
Graduation Rate Points:	80.0	Meets Standards 1.0 - 35.9%	
English Learner Points:	0.0	Does Not Meet Standards 0.0 - 0.9%	
Preliminary Score:	40.0		

AMO - Rating Demotions Participation Rates

The minimum Participation Rate is 95.0%. If any subgroup does not meet this requirement in either English Language Arts or Math, a rating demotion occurs. Participation Rate is not calculated if a subgroup does not have at least 40 students required to take the test.

English Language Arts

Subgroup	Metrics	Required to Participate #	Participated #	Participation Rate %
All Students		51	51	100.0
Am. Indian or Alaskan Native		0	0	NC
Asian or Pacific Islander		1	1	NC
Black, Non-Hispanic		9	9	NC
Hispanic		2	2	NC
Multiracial		4	4	NC
White, Non-Hispanic		35	35	NC
Economic Disadvantage		51	51	100.0
English Learner		0	0	NC
Students with Disabilities		17	17	NC

Math

Subgroup	Metrics	Required to Participate #	Participated #	Participation Rate %
All Students		42	42	100.0
Am. Indian or Alaskan Native		0	0	NC
Asian or Pacific Islander		0	0	NC
Black, Non-Hispanic		9	9	NC
Hispanic		2	2	NC
Multiracial		6	6	NC
White, Non-Hispanic		25	25	100.0
Economic Disadvantage		42	42	100.0
English Learner		0	0	NC
Students with Disabilities		17	17	NC

AMO - Final Score and Rating

If a rating demotion is required, then the preliminary score is reduced by 5.0 points to determine the final score. The final score is applied to the rating scale to determine the final rating.

Preliminary Rating:
Exceeds Standards

Demotion Required?
No

Final Score:
40.0

Rating Scale:
Exceeds Standards 36.0 - 100.0%
Meets Standards 1.0 - 35.9%
Does Not Meet 0.0 - 0.9% Standards

RATING
Exceeds Standards

Overall Rating for the Dropout Recovery School

	Exceeds	Meets	Does Not Meet
Combined Graduation Rate:	30	20	0
High School Assessment Test Passage:	20	10	0
Progress:	30	20	0
Annual Measurable Objectives:	20	10	0

60 points earned out of a possible 100 = 60.0%

A school that improves its High School Assessment Test Passage Rate and the 4-year, 5-year, 6-year, 7-year, and 8-year Graduation Rates by 10% or more in both the current and prior two year comparison periods can be rated no lower than Meets Expectations.

Because the school earned enough points for a higher rating than Does Not Meet Standards, this calculation does not apply.

Rating Scale:
Exceeds Standards 80.0 - 100.0%
Meets Standards 40.0 - 79.9%
Does Not Meet 0.0 - 39.9% Standards

60

RATING
Meets Standards