

# 2018 DORP Report for Focus Learning Academy of Southeastern Columbus

IRN: 142935  
School Type: High School

Address: 4480 Refugee Rd  
Columbus, OH 43232-4459

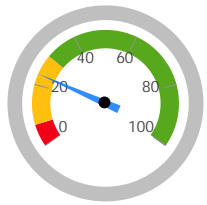
County: Franklin  
ITC: MEC  
Sponsor: Focus Learning Academy of Southeastern Columbus

## Graduation Rates

### 4-Year Graduation Rate

Applies to the Class of 2017, i.e. students who entered 9th grade in 2014 and graduated by 2017.

Class of 2017 Graduates:	Students Countable:	Graduation Rate:
19	81	23.5%



RATING

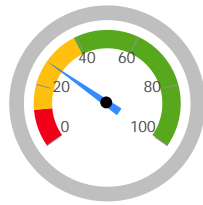
## Meets Standards

Exceeds	36.0-100.0%
Meets	8.0-35.9%
Does Not Meet	0.0-7.9%

### 5-Year Graduation Rate

Applies to the Class of 2016, i.e. students who entered 9th grade in 2013 and graduated by 2017.

Class of 2016 Graduates:	Students Countable:	Graduation Rate:
33	118	28.0%



RATING

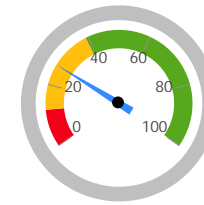
## Meets Standards

Exceeds	40.0-100.0%
Meets	12.0-39.9%
Does Not Meet	0.0-11.9%

### 6-Year Graduation Rate

Applies to the Class of 2015, i.e. students who entered 9th grade in 2012 and graduated by 2017.

Class of 2015 Graduates:	Students Countable:	Graduation Rate:
23	86	26.7%



RATING

## Meets Standards

Exceeds	40.0-100.0%
Meets	12.0-39.9%
Does Not Meet	0.0-11.9%

### 7-Year Graduation Rate

Applies to the Class of 2014, i.e. students who entered the 9th grade in 2011 and graduated by 2017.

Class of 2014 Graduates:	Students Countable:	Graduation Rate:
29	122	23.8%

### 8-Year Graduation Rate

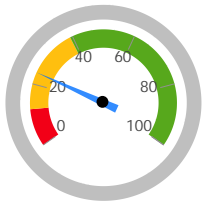
Applies to the Class of 2013, i.e. students who entered the 9th grade in 2010 and graduated by 2017.

Class of 2013 Graduates:	Students Countable:	Graduation Rate:
20	116	17.2%

### Combined Graduation Rate

The weighted average of the five individual graduation rates.

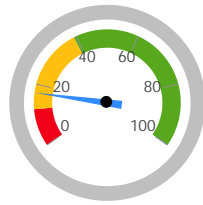
Combined Graduates:	Combined Students:	Graduation Rate:
124	523	23.7%



**RATING**

**Meets Standards**

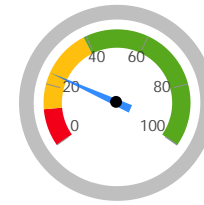
Exceeds 40.0-100.0%  
 Meets 12.0-39.9%  
 Does Not Meet 0.0-11.9%



**RATING**

**Meets Standards**

Exceeds 40.0-100.0%  
 Meets 12.0-39.9%  
 Does Not Meet 0.0-11.9%



**RATING**

**Meets Standards**

Exceeds 40.0-100.0%  
 Meets 12.0-39.9%  
 Does Not Meet 0.0-11.9%

### High School Assessment Test Passage Rate

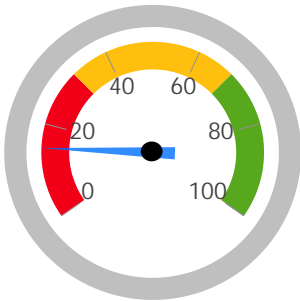
The test passage rate is the percent of students in 12th grade or nearing 22 years old who have passed all required high school assessments.

Students in the School for a Full Academic Year:  
**47**

Students Who Passed All Required Tests:  
**7**

Students who Passed All Required Tests:  
**14.9%**

Exceeds 68.0-100.0%  
 Meets 32.0-67.9%  
 Does Not Meet 0.0-31.9%



**RATING**

**Does Not Meet Standards**

### Progress

This measures the progress for all students in math and reading.

Progress Score		
Reading	Mathematics	Overall
Meets Standards	Meets Standards	Meets Standards
	Exceeds 2.00 and up	
	Meets -2.00 to 1.99	
	Does Not Meet below -2.00	

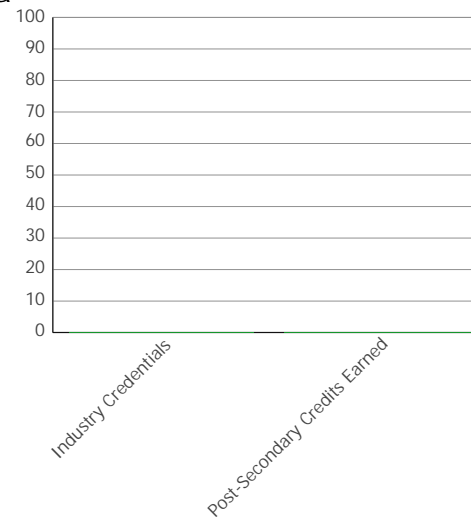
**RATING**

**Meets Standards**

### Other Student Outcome Data

Denominator (Graduation Cohort for 2013 - 199 2017):

	Student #	Pct
Industry Credentials	0	0.0
Post-Secondary Credits Earned	0	0.0



### Annual Measurable Objectives

The Annual Measurable Objectives score is determined using multiple data points. For each student subgroup, the school's results are compared to the statewide Annual Measurable Objectives (AMOs). "Points" are earned based on how the school compared to the AMO, to their results last year (improvement), and to how far they were from meeting the AMO (the "gap"). These points are averaged to determine a preliminary score and rating, which may be demoted if certain minimum performance requirements are not met.

### AMO - English Language Arts Proficiency

Subgroup	Metrics	Took Test #	Perf Index	Goal	LT Goal	LT Gap	Took Test LY #	Perf Index LY	Improve	LT Gap Close %	VA Gain Index	Points
All Students		27	42.188	83.8	100.0	57.8	19	NC	0.0	0.0%	0	0.0
Am. Indian or Alaskan Native		0	NC	78.6	88.1	NC	0	NC	NC	NC	NC	NR
Asian or Pacific Islander		1	NC	92.4	95.8	NC	0	NC	NC	NC	NC	NR
Black, Non-Hispanic		17	NC	63.4	79.7	NC	11	NC	NC	NC	NC	NR
Hispanic		3	NC	71.8	84.4	NC	1	NC	NC	NC	NC	NR
Multiracial		1	NC	78.3	88.0	NC	0	NC	NC	NC	NC	NR
White, Non-Hispanic		5	NC	86.3	92.4	NC	7	NC	NC	NC	NC	NR
Economic Disadvantage		27	42.188	70.8	83.8	41.6	18	NC	0.0	0.0%	0	0.0
English Learner		0	NC	65.6	80.9	NC	0	NC	NC	NC	NC	NR
Students with Disabilities		7	NC	57.3	76.3	NC	3	NC	NC	NC	NC	NR

Total of Subgroup Points: 0.0  
 Possible Subgroup Points: 200.0

English Language Arts Points Earned (Total / Possible): 0.0

1. If Perf Index is greater than the (Short Term) Goal, then 100.0 points are earned and the Long Term Gap is N/A. If not, the LT Gap is the difference between Perf Index and the Long Term Goal. Subgroups of less than 25 students are Not Rated (NR).
2. A full 100.0 points are also awarded if the single year Value Added Gain Index for the subgroup is at least 1.0.
3. Otherwise, LT Gap Close % = (Improv / LT Gap) \* 100., and the points awarded are LT Gap Close % \* 10. It is impossible to earn more than 100 or less than zero points.
4. After all subgroup points have been calculated, they are added together. The total is divided by the maximum points possible (100 x number of subgroups that were not NR) to determine the final points for Reading.

### AMO - Math Proficiency

Subgroup	Metrics	Took Test #	Perf Index	Goal	LT Goal	LT Gap	Took Test LY #	Perf Index LY	Improve	LT Gap Close %	VA Gain Index	Points
All Students		37	36.071	84.2	100.0	63.9	7	NC	0.0	0.0%	0	0.0
Am. Indian or Alaskan Native		0	NC	76.8	87.1	NC	0	NC	NC	NC	NC	NR
Asian or Pacific Islander		1	NC	97.8	98.8	NC	0	NC	NC	NC	NC	NR
Black, Non-Hispanic		24	NC	61.3	78.5	NC	6	NC	NC	NC	NC	NR
Hispanic		2	NC	72.3	84.6	NC	0	NC	NC	NC	NC	NR
Multiracial		2	NC	77.7	87.6	NC	0	NC	NC	NC	NC	NR
White, Non-Hispanic		8	NC	87.6	93.1	NC	1	NC	NC	NC	NC	NR
Economic Disadvantage		37	36.071	71.1	84.0	47.9	7	NC	0.0	0.0%	0	0.0
English Learner		0	NC	70.1	83.4	NC	0	NC	NC	NC	NC	NR
Students with Disabilities		8	NC	58.2	76.8	NC	1	NC	NC	NC	NC	NR

Total of Subgroup Points: 0.0  
 Possible Subgroup Points: 200.0  
 Math Points Earned (Total / Possible): 0.0

1. If Perf Index is greater than the (Short Term) Goal, then 100.0 points are earned and the Long Term Gap is N/A. If not, the LT Gap is the difference between Perf Index and the Long Term Goal. Subgroups of less than 25 students are Not Rated (NR).
2. A full 100.0 points are also awarded if the single year Value Added Gain Index for the subgroup is at least 1.0.
3. Otherwise, LT Gap Close % = (Improv / LT Gap) \* 100., and the points awarded are LT Gap Close % \* 10. It is impossible to earn more than 100 or less than zero points.
4. After all subgroup points have been calculated, they are added together. The total is divided by the maximum points possible (100 x number of subgroups that were not NR) to determine the final points for Math.

### AMO - Graduation Rate

Subgroup	Metrics	Grads #	Non-Grads #	Cohort Students #	Grad Rate %	Goal	Gap	Grads LY #	Non-Grads LY #	Cohort Students # LY	Grad Rate LY %	Improve	Points
All Students		19	62	81	23.5	85.0	69.5	20	75	95	21.1	2.4	34.5
Am. Indian or Alaskan Native		0	1	1	NC	78.8	NC	0	1	1	NC	NC	NR
Asian or Pacific Islander		0	0	0	NC	88.8	NC	0	0	0	NC	NC	NR
Black, Non-Hispanic		16	50	66	24.2	68.5	58.3	14	58	72	19.4	4.8	82.3
Hispanic		0	3	3	NC	74.8	NC	0	4	4	NC	NC	NR
Multiracial		0	4	4	NC	79.9	NC	2	5	7	NC	NC	NR
White, Non-Hispanic		3	4	7	NC	88.5	NC	4	7	11	NC	NC	NR
Economic Disadvantage		18	56	74	24.3	74.3	61.4	19	70	89	21.3	3.0	48.9
English Learner		0	2	2	NC	59.0	NC	0	0	0	NC	NC	NR
Students with Disabilities		7	13	20	NC	72.3	NC	2	15	17	NC	NC	NR

Total of Subgroup Points: 165.7  
 Possible Subgroup Points: 300.0  
 Graduation Rate Points Earned (Total / Possible): 55.2

1. If [Grad Rate %] is greater than the Goal, then 100.0 points are earned and the Gap is not applicable (N/A). If not, the Gap is the difference between [Grad Rate %] and the Goal. Subgroups of less than 30 students are Not Rated (NR).
2. Improvement from last year's result is [Grad Rate %] minus [Grad Rate LY %]. If Improvement is greater than the Gap, then 100.0 points are earned.
3. Otherwise, partial points are awarded using the formula (Improvement / Gap) \* 100. It is impossible to earn more than 100 or less than zero points.
4. After all subgroup points have been calculated, they are added together. The total is divided by the maximum points possible (100 x number of subgroups that were not NR) to determine the final points for Graduation Rate.

### AMO - English Learners

	This Year	Last Year	Change
EL Students #	1	0	
Proficient #	0	0	
Not Proficient, Met Growth Target #	1	0	
Met %	100.000	0.000	0.000
Interim Goal %	51.0		
Interim Goal Met?	*		
Long Term Goal %	75.0	75.0	
Long Term Goal Gap	0.000	75.000	-75.000

$$\begin{matrix} \text{Met \%} \\ \text{Improvement} \end{matrix} \quad 0.000 \quad / \quad \begin{matrix} \text{Current} \\ \text{Year Gap} \end{matrix} \quad 0.000 \quad = \quad 0.000\% \quad = \quad 0.000 \quad \text{Points}$$

- 1) Please note that intermediate calculations are not rounded. Although three decimal places are displayed in this table, \*all\* decimal places are used internally until the final calculation, where the final points earned are rounded to one decimal place.
- 2) If the gap improvement is more than 10%, so the maximum 100 points have been earned.

### AMO - Preliminary Score

The preliminary score is the average of the English Language Arts, Math, and Graduation Rate from the preceding pages. The result is applied to the rating scale to determine a preliminary rating.

English Language Arts Points:	0.0	<b>Rating Scale:</b> Exceeds Standards 36.0 - 100.0% Meets Standards 1.0 - 35.9% Does Not Meet Standards 0.0 - 0.9%	<b>Preliminary Rating:</b>  <h2>Meets Standards</h2>
Math Points:	0.0		
Graduation Rate Points:	55.2		
English Learner Points:	0.0		
<b>Preliminary Score:</b>	<b>18.4</b>		

### AMO - Rating Demotions

### Participation Rates

The minimum Participation Rate is 95.0%. If any subgroup does not meet this requirement in either English Language Arts or Math, a rating demotion occurs. Participation Rate is not calculated if a subgroup does not have at least 40 students required to take the test.

#### English Language Arts

Subgroup	Metrics	Required to Participate #	Participated #	Participation Rate %
All Students		57	57	100.0
Am. Indian or Alaskan Native		0	0	NC
Asian or Pacific Islander		2	2	NC
Black, Non-Hispanic		37	37	NC
Hispanic		5	5	NC
Multiracial		5	5	NC
White, Non-Hispanic		8	8	NC
Economic Disadvantage		57	57	100.0
English Learner		1	1	NC
Students with Disabilities		15	15	NC

#### Math

Subgroup	Metrics	Required to Participate #	Participated #	Participation Rate %
All Students		82	82	100.0
Am. Indian or Alaskan Native		0	0	NC
Asian or Pacific Islander		2	2	NC
Black, Non-Hispanic		58	58	100.0
Hispanic		4	4	NC
Multiracial		4	4	NC
White, Non-Hispanic		14	14	NC
Economic Disadvantage		82	82	100.0
English Learner		1	1	NC
Students with Disabilities		24	24	NC

### AMO - Final Score and Rating

If a rating demotion is required, then the preliminary score is reduced by 5.0 points to determine the final score. The final score is applied to the rating scale to determine the final rating.

Preliminary Rating:	Demotion Required?	Final Score:	Rating Scale:	<div style="background-color: #1a3d4d; color: white; padding: 5px; font-weight: bold;">RATING</div> <div style="font-size: 24px; font-weight: bold; margin-top: 10px;">Meets Standards</div>
Meets Standards	No	18.4	Exceeds Standards 36.0 - 100.0%	
			Meets Standards 1.0 - 35.9%	
			Does Not Meet 0.0 - 0.9% Standards	

Overall Rating for the Dropout Recovery School

	Exceeds	Meets	Does Not Meet
Combined Graduation Rate:	30	20	0
High School Assessment Test Passage:	20	10	0
Progress:	30	20	0
Annual Measurable Objectives:	20	10	0

50 points earned out of a possible 100 = 50.0%

A school that improves its High School Assessment Test Passage Rate and the 4-year, 5-year, 6-year, 7-year, and 8-year Graduation Rates by 10% or more in both the current and prior two year comparison periods can be rated no lower than Meets Expectations.

Because the school earned enough points for a higher rating than Does Not Meet Standards, this calculation does not apply.

**Rating Scale:**

Exceeds Standards	80.0 - 100.0%
Meets Standards	40.0 - 79.9%
Does Not Meet Standards	0.0 - 39.9%

50

RATING

Meets Standards

## 2018 DORP Report for Focus Learning Academy of Southwest Columbus

IRN: 142927  
School Type: High School

Address: 190 Southwood Ave  
Columbus, OH 43207-1133

County: Franklin  
ITC: MEC  
Sponsor: Focus Learning Academy of Southwest Columbus

### Graduation Rates

**4-Year Graduation Rate**  
Applies to the Class of 2017, i.e. students who entered 9th grade in 2014 and graduated by 2017.

Class of 2017 Graduates:	Students Countable:	Graduation Rate:
39	129	30.2%

**5-Year Graduation Rate**  
Applies to the Class of 2016, i.e. students who entered 9th grade in 2013 and graduated by 2017.

Class of 2016 Graduates:	Students Countable:	Graduation Rate:
26	126	20.6%

**6-Year Graduation Rate**  
Applies to the Class of 2015, i.e. students who entered 9th grade in 2012 and graduated by 2017.

Class of 2015 Graduates:	Students Countable:	Graduation Rate:
29	136	21.3%